

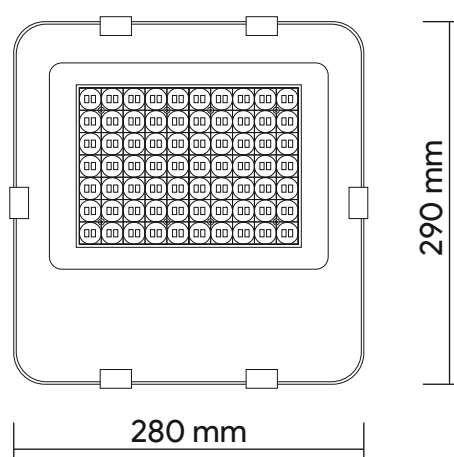
Flood Light

- Outdoor Flood Light
- Die Cast Aluminium Housing
- Pre -Treated Powder Coated Finish
- Clear Toughened Glass
- Watertight Silicon Rubber Gasket
- Earthing Safe Connection
- Optical Grade PMMA Asymmetric Lens
- SS Grade fasteners
- High current caring cable
- IP68 Potted Power Supply unit

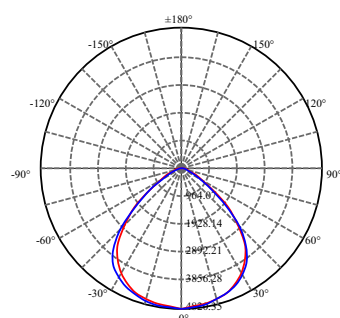
Material	Aluminium
System Power	100 W
CCT	6000K
Lumen	10371 lm
Efficacy	104 lm/W
CRI	80
Optic	95°
SDCM	<5
LED Life	L70 at 50000 burning hours
Safety Class	Class I
LED make	OSRAM
Driver Make	Lightup
System Warranty	Min 2 years / Max 5 years
Driving System	Constant Current
IP	66



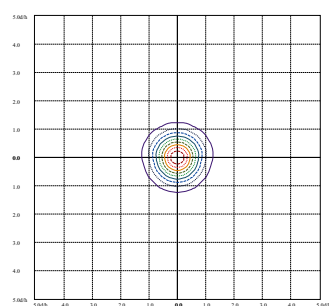
DIMENSION



DISTRIBUTION



LIGHT PATTERN



Studio
Lite Technology Co. Pvt. Ltd
Light Up House, 8/57,58,
Sahyog Co-Op Housing Society,
Anand Nagar, Santa Cruz (E),
Mumbai 400 055.

Factory
Lite Technology Co. Pvt. Ltd
2nd Floor, House no.11, Plot no.13,
Sapna Industrial Estate, Phase-II,
Near Nakoda School, Village-Saravali,
Tal-Bhiwandi, Dist-Thane,
Maharashtra-421 311.